

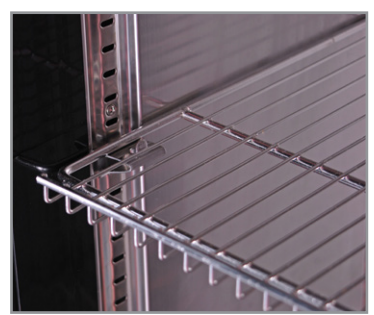
THIN AGER

Frigo vetrina per conservazione ed esposizione carne
Meat storage and display cooler

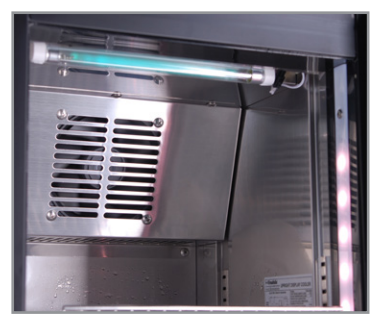
-
-
-
-
-

SMART LINK WIFI

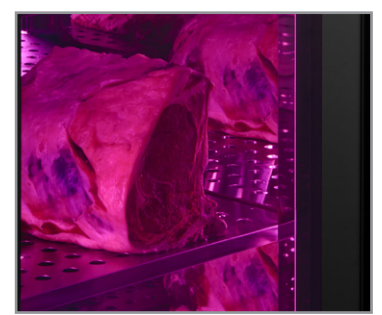
Interno in acciaio inox AISI 304
AISI 304 stainless steel inner liner



Lampada battericida UV
UV bactericide lamp



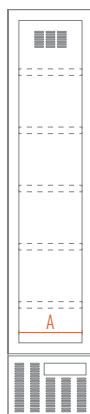
Esposizione e conservazione della carne
Meat storage and display



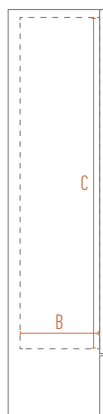
Caratteristiche / Features

| | |
|--|--|
| Modello / Model | THIN AGER |
| Temperatura / Temperature Range | 0 °C / +4 °C |
| Classe Climatica / Climate Class | 4 |
| Volume Netto-Lordo / Net-Gross Volume | Lt. 160 / 164 |
| Superficie Esterna / Body | Acciaio galvanizzato Galvanized stainless steel |
| Superficie Interna / Inner Liner | Acciaio inox Stainless steel |
| Termostato / Thermostat | Elettronico / Electronic Touch screen |
| Smart Link WiFi Controllo remoto / Remote controller | Optional |
| Spessore isolamento / Insulation thickness | mm 45 |
| Sbrinamento / Defrost | Automatico a fermo compressore Automatic compressor cycle |
| Illuminazione / Lighting | 1 Led verticale / Vertical |
| Chiusura automatica porta / Self closing door | Si / Yes |
| Chiave e serratura / Lock and key | Si / Yes |
| Mensole (LxP) / Shelves (WxD) | N° 5 - mm 294 x 355 |
| Piedi-Ruote / Feet-Rollers | 4 Piedi / 4 Feet |
| Peso Netto-Lordo / Net-Gross Weight | Kg 50 / 55 |
| Voltaggio / Voltage | V 220-240 |
| Frequenza / Frequency | Hz 50 |
| Refrigerante / Refrigerant | R600A |
| Assorbimento / Absorption | W 180 |
| Consumo Energia / Energy Consumption | Kwh/24H 1,57 |

FRONTE / FRONT



LATO / SIDE


Dimensioni mm / Dimensions mm

| | |
|---|------------------|
| Modello / Model | THIN AGER |
| Dimensioni Esterne (LxPxH) / External Dimensions (WxDxH) | 390 x 475 x 1880 |
| Dimensioni Imballo (LxPxH) / Packaging Dimensions (WxDxH) | 450 x 550 x 2080 |

Dimensioni Interne mm / Inner Dimensions mm

| | |
|------------------------|------|
| A - Larghezza / Width | 310 |
| B - Profondità / Depth | 365 |
| C - Altezza / Height | 1498 |

Dimensioni Personalizzazione (LxH) mm / Sticker Dimensions (WxH) mm

| | |
|---------------|------------|
| Lato / Side | 403 x 1850 |
| Vetro / Glass | 284 x 1468 |