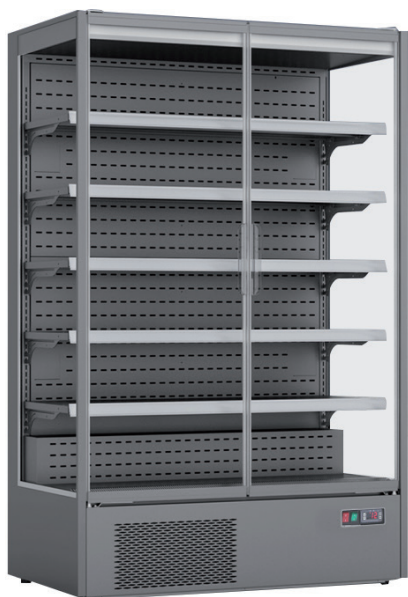


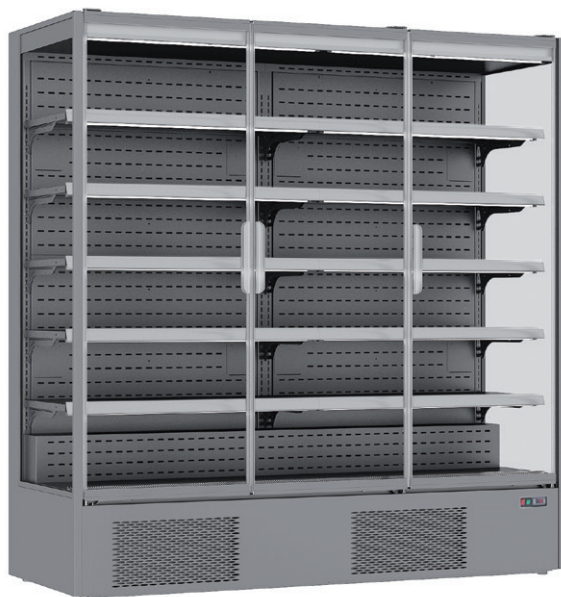


SMART LINK WIFI



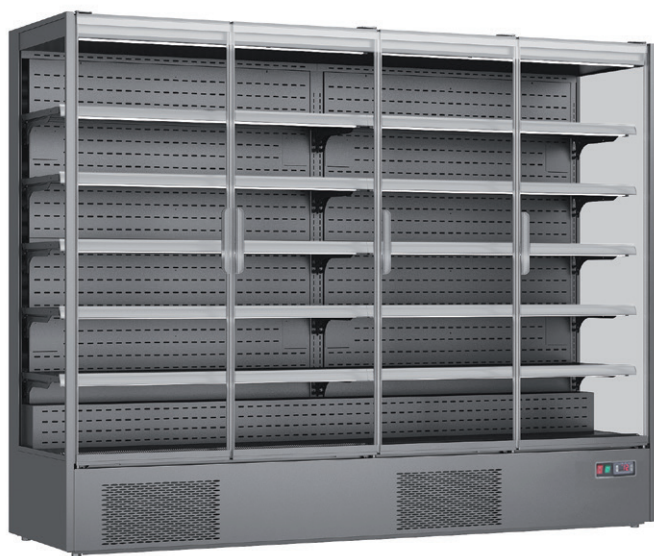
VISION 150

Armadio murale 3 lati vetro, due porte ventilato
 Temperatura normale
 Ventilated 3 sided glasses, two door multideck cooler
 Positive temperature



VISION 200

Armadio murale 3 lati vetro, tre porte ventilato
 Temperatura normale
 Ventilated 3 sided glasses, three door multideck cooler
 Positive temperature



VISION 250

Armadio murale 3 lati vetro, quattro porte ventilato
 Temperatura normale
 Ventilated 3 sided glasses, four door multideck cooler
 Positive temperature



Mensole regolabili e inclinabili
 Adjustable and tiltable shelves



Porte in vetro a battente senza cornice
 Frameless glass hinged door

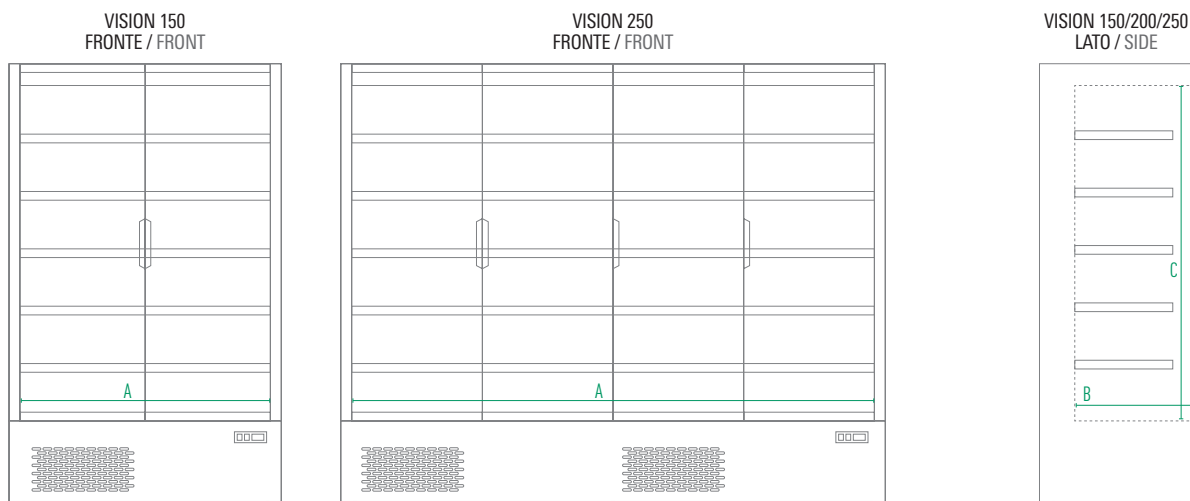


Termostato elettronico
 Electronic thermostat



Caratteristiche / Features

Modello / Model	VISION 150	VISION 200	VISION 250
Temperatura / Temperature Range	-1 °C / +5 °C	-1 °C / +5 °C	-1 °C / +5 °C
Classe Climatica / Climate Class	3	3	3
Volume Netto-Lordo / Net-Gross Volume	Lt. 764 / 1292	Lt. 1147 / 1939	Lt. 1529 / 2585
Superficie Esterna / Body	Lamiera preverniciata con trattamento anticorrosione Prepainted sheet with anticorrosion treatment	Lamiera preverniciata con trattamento anticorrosione Prepainted sheet with anticorrosion treatment	Lamiera preverniciata con trattamento anticorrosione Prepainted sheet with anticorrosion treatment
Superficie Interna / Inner Liner	Lamiera preverniciata con trattamento anticorrosione Prepainted sheet with anticorrosion treatment	Lamiera preverniciata con trattamento anticorrosione Prepainted sheet with anticorrosion treatment	Lamiera preverniciata con trattamento anticorrosione Prepainted sheet with anticorrosion treatment
Termostato / Thermostat	Elettronico / Electronic	Elettronico / Electronic	Elettronico / Electronic
Rumorosità / Noise level	dB 58	dB 62	dB 65
Smart Link WiFi Controllo remoto / Remote controller	Optional	Optional	Optional
Spessore isolamento / Insulation thickness	mm 40	mm 40	mm 40
Sbrinamento / Defrost	Automatico / Automatic	Automatico / Automatic	Automatico / Automatic
Illuminazione / Lighting	Led	Led	Led
Mensole (LxP) / Shelves (WxD)	n°5 - mm 1248 x 450	n°10 - mm 935 x 450	n°10 - mm 1248 x 450
Piedi-Ruote / Feet-Rollers	4 Piedini / 4 Feets	6 Piedini / 6 Feets	6 Piedini / 6 Feets
Peso Netto-Lordo / Net Weight	Kg 260 / 300	Kg 370 / 420	Kg 440 / 500
Voltaggio / Voltage	V 220-240	V 220-240	V 220-240
Frequenza / Frequency	Hz 50	Hz 50	Hz 50
Refrigerante / Refrigerant	R290	R290	R290
Assorbimento / Absorption	W 550	W 980	W 1060
Consumo Energia / Energy Consumption	Kwh/24H 5,87	Kwh/24H 8,13	Kwh/24H 10,2


Dimensioni mm / Dimensions mm

Modello / Model	VISION 150	VISION 200	VISION 250
Dimensioni Esterne (LxPxH) External Dimensions (WxDxH)	1310 x 740 x 2010	1935 x 740 x 2010	2560 x 740 x 2010
Dimensioni Imballo (LxPxH) Packaging Dimensions (WxDxH)	1340 x 767 x 2120	1965 x 767 x 2120	2590 x 767 x 2120

Dimensioni Interne mm / Inner Dimensions mm

A - Larghezza / Width	1250	1875	2500
B - Profondità / Depth	544	544	544
C - Altezza / Height	1540	1540	1540