



**FR 570 VGC NF**

Freezer verticale no frost con agitatore  
No frost fan assisted vertical freezer



**FR 1240 VGC NF**

Freezer verticale doppia porta  
no frost con agitatore  
No frost fan assisted double door  
vertical freezer



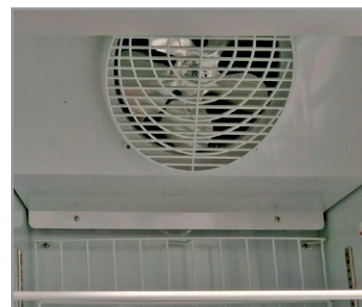
Ripiani  
Shelves



Illuminazione led  
Led lighting

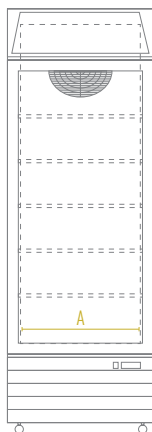
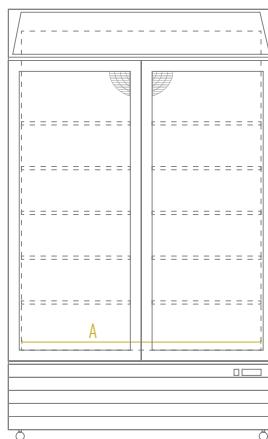


Motoventola  
Fan motor

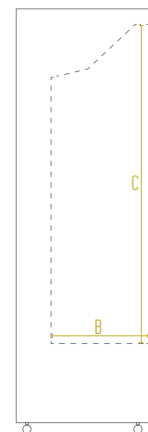


**Caratteristiche / Features**

Modello / Model	FR 570 VGC NF	FR 1240 VGC NF
Temperatura / Temperature Range	-18 °C / -22 °C	-18 °C / -22 °C
Classe Climatica / Climate Class	7	7
Volume Netto-Lordo / Net-Gross Volume	Lt. 360 / 570	Lt. 800 / 1240
Superficie Esterna / Body	Lamiera preverniciata con trattamento anticorrosione Prepainted sheet with anticorrosion treatment	Lamiera preverniciata con trattamento anticorrosione Prepainted sheet with anticorrosion treatment
Superficie Interna Inner Liner	Lamiera Plastificata Plastic coated metal sheet	Lamiera Plastificata Plastic coated metal sheet
Termometro / Thermometer	Digitale / Digital	Digitale / Digital
Regolatore temperatura / Controller	Elettronico / Electronic	Elettronico / Electronic
Spessore isolamento / Insulation thickness	mm 60	mm 60
Sbrinamento / Defrost	Automatico a gas caldo + Manuale Automatic with hot gas system + Manual	Automatico a gas caldo + Manuale Automatic with hot gas system + Manual
Illuminazione / Lighting	2 Led verticali / Vertical	2 Led verticali / Vertical
Chiusura automatica porta / Self closing door	Si / Yes	Si / Yes
Chiave e serratura / Lock and key	Si / Yes	Si / Yes
Mensole (LxP) / Shelves (WxD)	N° 5 - mm 513 x 410	N° 10 - mm 605 x 410
Piedi-Ruote / Feet-Rollers	4 Ruote (2 autofrenanti) 4 Rollers (2 with stopper)	4 Ruote (2 autofrenanti) 4 Rollers (2 with stopper)
Peso Netto-Lordo / Net-Gross Weight	Kg 128 / 145	Kg 208 / 228
Voltaggio / Voltage	V 220-240	V 220-240
Frequenza / Frequency	Hz 50	Hz 50
Refrigerante / Refrigerant	R290	R290
Assorbimento / Absorption	W 731,5	W 1150
Consumo Energia / Energy Consumption	KwH/24H 12,00	KwH/24H 18,4

 FR 570 VGC NF  
FRONTE / FRONT

 FR 1240 VGC NF  
FRONTE / FRONT


LATO / SIDE


**Dimensioni mm / Dimensions mm**

Modello / Model	FR 570 VGC NF	FR 1240 VGC NF
Dimensioni Esterne (LxPxH) / External Dimensions (WxDxH)	670 x 700 x 1980	1220 x 700 x 1980
Dimensioni Imballo (LxPxH) / Packaging Dimensions (WxDxH)	720 x 730 x 2120	1270 x 730 x 2120

**Dimensioni Interne mm / Inner Dimensions mm**

A - Larghezza / Width	550	1100
B - Profondità / Depth	445	445
C - Altezza / Height	1465	1465

**Dimensioni Personalizzazione (LxH) mm / Sticker Dimensions (WxH) mm**

Lato / Side	560 x 1910	560 x 1910
Vetro / Glass	570 x 1275	512,5 x 1275 (x2)
Opalina / Canopy	630 x 188	1180 x 193