

SMART LINK WIFI



**CLW 300 XH**

Frigo vini ventilato  
Ventilated wine cooler

- INOX
- °C 22
- LED
- 4 L

**CLW 500 XH**

Frigo vini ventilato  
Ventilated wine cooler

- INOX
- °C 22
- LED
- 4 L

Termostato elettronico  
Electronic thermostat



Interno in acciaio AISI 304 specchiato  
Mirrored stainless steel AISI 304 inner liner

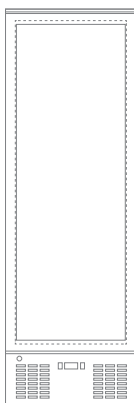
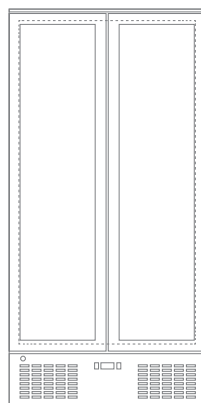


Illuminazione led  
Led lighting

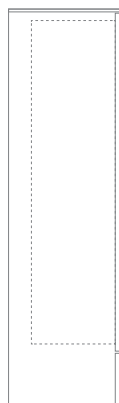


**Caratteristiche / Features**

Modello / Model	CLW 300 XH	CLW 500 XH
Temperatura / Temperature Range	0 °C / +10 °C	0 °C / +10 °C
Classe Climatica / Climate Class	4	4
Volume Netto-Lordo / Net-Gross Volume	Lt. 243 / 300	Lt. 384 / 477
Superficie Esterna / Body	Lamiera preverniciata con trattamento anticorrosione Prepainted sheet with anticorrosion treatment	Lamiera preverniciata con trattamento anticorrosione Prepainted sheet with anticorrosion treatment
Superficie Interna / Inner Liner	Acciaio AISI 304 specchiato Mirrored stainless steel AISI 304	Acciaio AISI 304 specchiato Mirrored stainless steel AISI 304
Termostato / Thermostat	Elettronico / Electronic	Elettronico / Electronic
Smart Link WiFi   Controllo remoto / Remote controller	Optional	Optional
Rumorosità / Noise level	dB 53	dB 55
Spessore isolamento / Insulation thickness	mm 45	mm 45
Sbrinamento / Defrost	Automatico a fermo compressore Automatic compressor cycle	Automatico a fermo compressore Automatic compressor cycle
Illuminazione / Lighting	2 Led Verticali / Vertical	2 Led Verticali / Vertical
Mensole (LxP) / Shelves (WxD)	N° 5 - mm 492 x 353	N° 10 - mm 392 x 353
Piedi-Ruote / Feet-Rollers	4 Piedini / 4 Feet	4 Piedini / 4 Feet
Peso Netto-Lordo / Net-Gross Weight	Kg 72 / 82	Kg 100 / 113
Voltaggio / Voltage	V 220-240	V 220-240
Frequenza / Frequency	Hz 50	Hz 50
Refrigerante / Refrigerant	R600A	R290A
Assorbimento / Absorption	W 195	W 365
Consumo Energia / Energy Consumption	KwH/24H 1,55	KwH/24H 2,4

 CLW 300 XH  
FRONTE / FRONT

 CLW 500 XH  
FRONTE / FRONT


LATO / SIDE


**Capienza / Capacity**

Modello / Model	CLW 300 XH	CLW 500 XH
Btg cl. 75 / Btl cl. 75	140	200

Dati indicativi e variabili a seconda dei diversi packaging  
Variable data depending on the different packaging

**Dimensioni mm / Dimensions mm**

Modello / Model	CLW 300 XH	CLW 500 XH
Dimensioni Esterne (LxPxH) / External Dimensions (WxDxH)	600 x 530 x 1820	900 x 530 x 1820
Dimensioni Imballo (LxPxH) / Packaging Dimensions (WxDxH)	645 x 560 x 2007	950 x 560 x 2007

**Dimensioni Interne mm / Inner Dimensions mm**

A - Larghezza / Width	510	810
B - Profondità / Depth	385	385
C - Altezza / Height	1485	1485

**Dimensioni Personalizzazione (LxH) mm / Sticker Dimensions (WxH) mm**

Lato / Side	450 x 1394	450 x 1394
Vetro / Glass	532 x 1480	381 x 1480