

# ESPOSITORI PER SUSHI

## SUSHI SHOWCASE



Smart  
Link  
Wifi



### SUSHI 120

Espositore soprabanco per sushi.  
Sushi showcase.



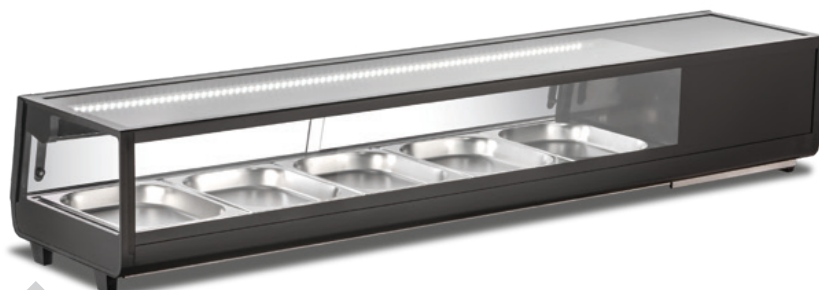
### SUSHI 135

Espositore soprabanco per sushi.  
Sushi showcase.



### SUSHI 150

Espositore soprabanco per sushi.  
Sushi showcase.



### SUSHI 180

Espositore soprabanco per sushi.  
Sushi showcase.

Catering

 Klimaitalia



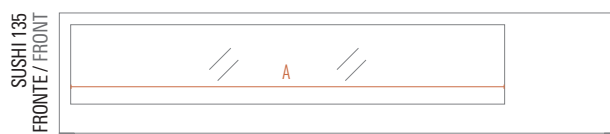
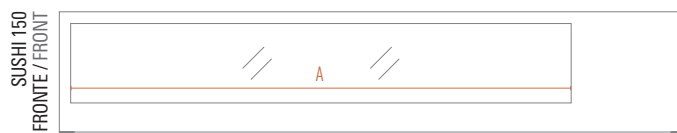
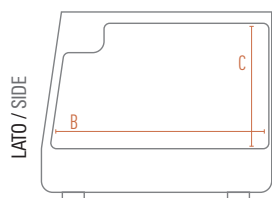
Illuminazione led  
Led lighting



Termostato elettronico  
Electronic thermostat



Vaschette e superficie interna in acciaio AISI 304  
AISI 304 stainless steel pans and inner liner



Dimensioni mm / Dimensions mm	SUSHI 120	SUSHI 135	SUSHI 150	SUSHI 180
Dimensioni Esterne (LxPxH) / External Dimensions (WxDxH)	1177 x 406 x 318	1353 x 406 x 318	1529 x 406 x 318	1800 x 406 x 318
Dimensioni Imballo (LxPxH) / Packaging Dimensions (WxDxH)	1260 x 500 x 520	1440 x 500 x 520	1610 x 500 x 520	1880 x 500 x 520
A - Larghezza / Width	758	1353	1110	1370
B - Profondità / Depth	340	340	340	340
C - Altezza / Height	220	220	220	220

Caratteristiche Tecniche / Technical Features	SUSHI 120	SUSHI 135	SUSHI 150	SUSHI 180
Temperatura / Temperature Range	0 °C / +12 °C	0 °C / +12 °C	0 °C / +12 °C	0 °C / +12 °C
Classe Climatica / Climate Class	4	4	4	4
Volume Netto-Lordo / Net-Gross Volume	Lt. 31 / 42	Lt. 38 / 52	Lt. 45 / 62	Lt. 59 / 82
Superficie Esterna / Body	Vetro, plastica Glass, plastic	Vetro, plastica Glass, plastic	Vetro, plastica Glass, plastic	Vetro, plastica Glass, plastic
Superficie Interna / Inner Liner	Acciaio Stainless steel	Acciaio Stainless steel	Acciaio Stainless steel	Acciaio Stainless steel
Termostato / Thermostat	Elettronico / Electronic	Elettronico / Electronic	Elettronico / Electronic	Elettronico / Electronic
Smart Link WiFi   Controllo remoto / Remote controller	Si	Si	Si	Si
Spessore isolamento / Insulation thickness	32 mm	32 mm	32 mm	32 mm
Sbrinamento / Defrost	Automatico / Automatic	Automatico / Automatic	Automatico / Automatic	Automatico / Automatic
Illuminazione / Lighting	1 led	1 led	1 led	1 led
Vaschette Gastronorm GN - Includi GN pans - Included	N° 4 GN1/3 (325 x 176 mm)	N° 5 GN1/3 (325 x 176 mm)	N° 6 GN1/3 (325 x 176 mm)	N° 5 GN1/2 (325 x 265 mm)
Piedi-Ruote / Feet-Rollers	4 Piedi / 4 Feet	4 Piedi / 4 Feet	4 Piedi / 4 Feet	4 Piedi / 4 Feet
Peso Netto-Lordo / Net-Gross Weight	Kg 35,5 / 53,5	Kg 41 / 60	Kg 44,5 / 68	Kg 48,5 / 74,9
Voltaggio / Voltage	V 220-240	V 220-240	V 220-240	V 220-240
Frequenza / Frequency	Hz 50	Hz 50	Hz 50	Hz 50
Refrigerante / Refrigerant	R290	R290	R290	R290
Assorbimento / Absorption	W 180	W 180	W 180	W 180
Consumo Energia / Energy Consumption	KwH/24H 1,215	KwH/24H 1,546	KwH/24H 1,758	KwH/24H 1,949